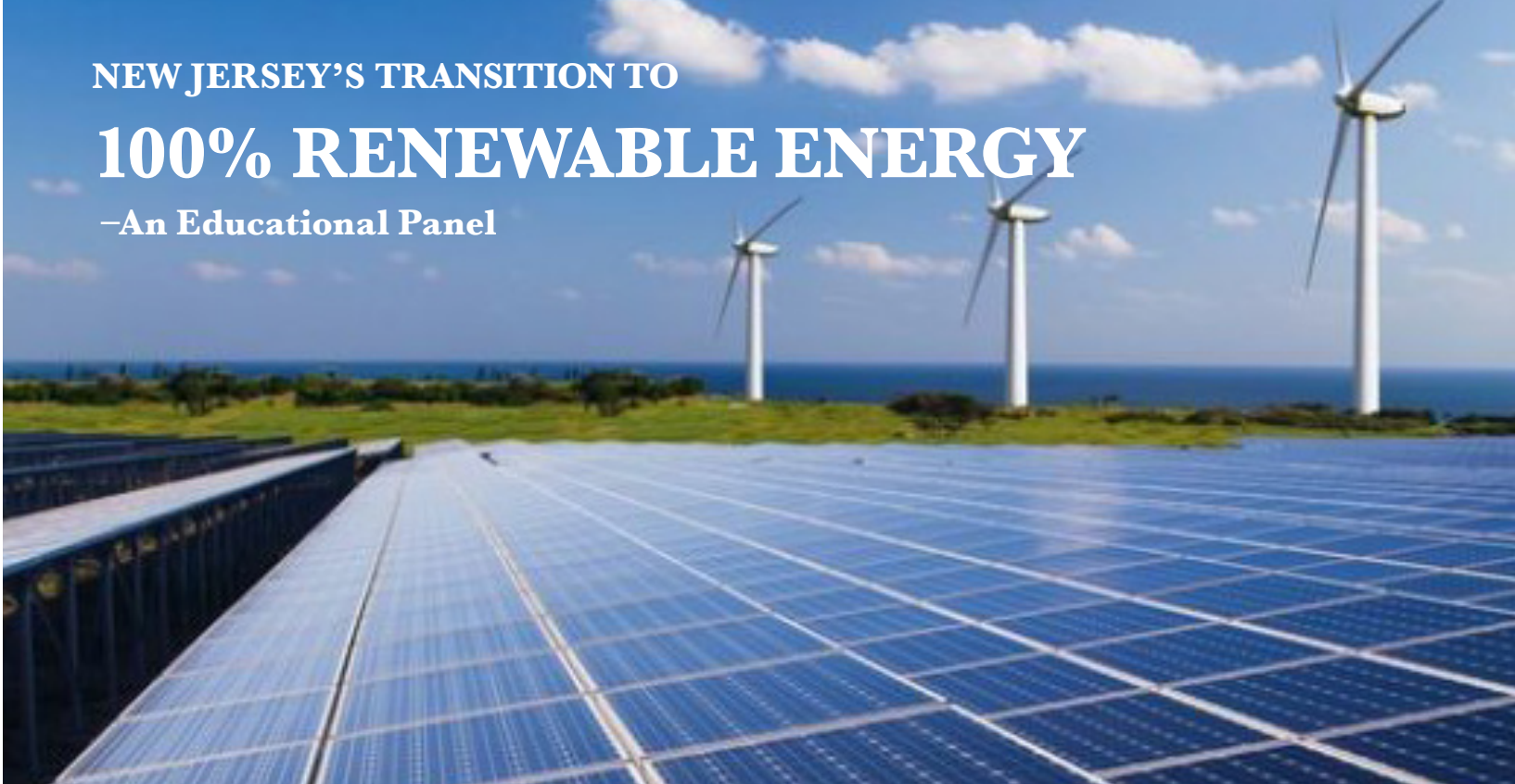


NEW JERSEY'S TRANSITION TO

100% RENEWABLE ENERGY

—An Educational Panel



PANELISTS



Serpil Guran

Director
Rutgers Ecocomplex



Dan Fatton

Executive Director
Work Environment Council



Joseph L. Fiordaliso

President
NJ Board of Public Utilities



Richard Lawton

Executive Director
NJ Sustainable Business Council



Lyle Rawlings

President MidAtlantic
Solar Energy Industry Association



Jim Walsh

Energy Policy Analyst
Food and Water Watch

WHY THIS MATTERS

Our state has been moving toward renewable generation of electricity since 2007, a transition that affects our economy, health, and climate. And because scientists have concluded that greenhouse gas emissions are causing both a global increase in temperature and sea level rise—a serious threat to New Jersey where our coastal region is subsiding—there is a push to accelerate the transition. The panel will address how that will impact jobs in conventional industry, the cost of electricity, and the stability and resilience of the power grid.

We'll open with a short educational presentation and a presentation from the panelists representing business, labor, government, and environmental groups. Then a League of Women Voters moderator will ask them prepared questions, plus questions you submit.



<https://www.facebook.com/events/357297514787534/>

SPONSORS

The League of Women Voters of New Jersey
Westfield Green Team
Westfield High School Environmental Science Classes
Unitarian Universalist Faith Action NJ
Beacon Unitarian Universalist Congregation in Summit